

# South Gloucestershire Landscape Character Assessment

## Annex I: Visually Important Hillside

### South Gloucestershire Council

**Final Draft Report for Adoption Chapter 9**

Prepared by LUC

September 2024



Version	Status	Prepared	Checked	Approved	Date
1	Draft Method and Pilot	E White	K Davies	K Davies	24.02.2023
2	Draft Report	J Ashton Davies E White	E White	K Davies	28.04.2023
3	Draft Report	E White	E White	K Davies	05.07.2023
4	Final Draft	E White	E White	K Davies	01.11.2023
5	Final Draft (updated following New Local Plan Phase 3 consultation)	E White	E White	K Davies	20.06.2024
6	Final Draft Report for Adoption	E White	E White	K Davies	11.09.2024



## Land Use Consultants Limited

Registered in England. Registered number 2549296. Registered office: 250 Waterloo Road, London SE1 8RD. Printed on 100% recycled paper

# Contents

<b>Chapter 9</b>	<b>62</b>
Wick’s / Butcher’s Hill and Baden Hill – including Abbots- side Hill and outlying slopes between Howcroft Cottages and the Little Avon River	
Characteristics	66
Summary	68
<b>References</b>	<b>69</b>

## Chapter 9

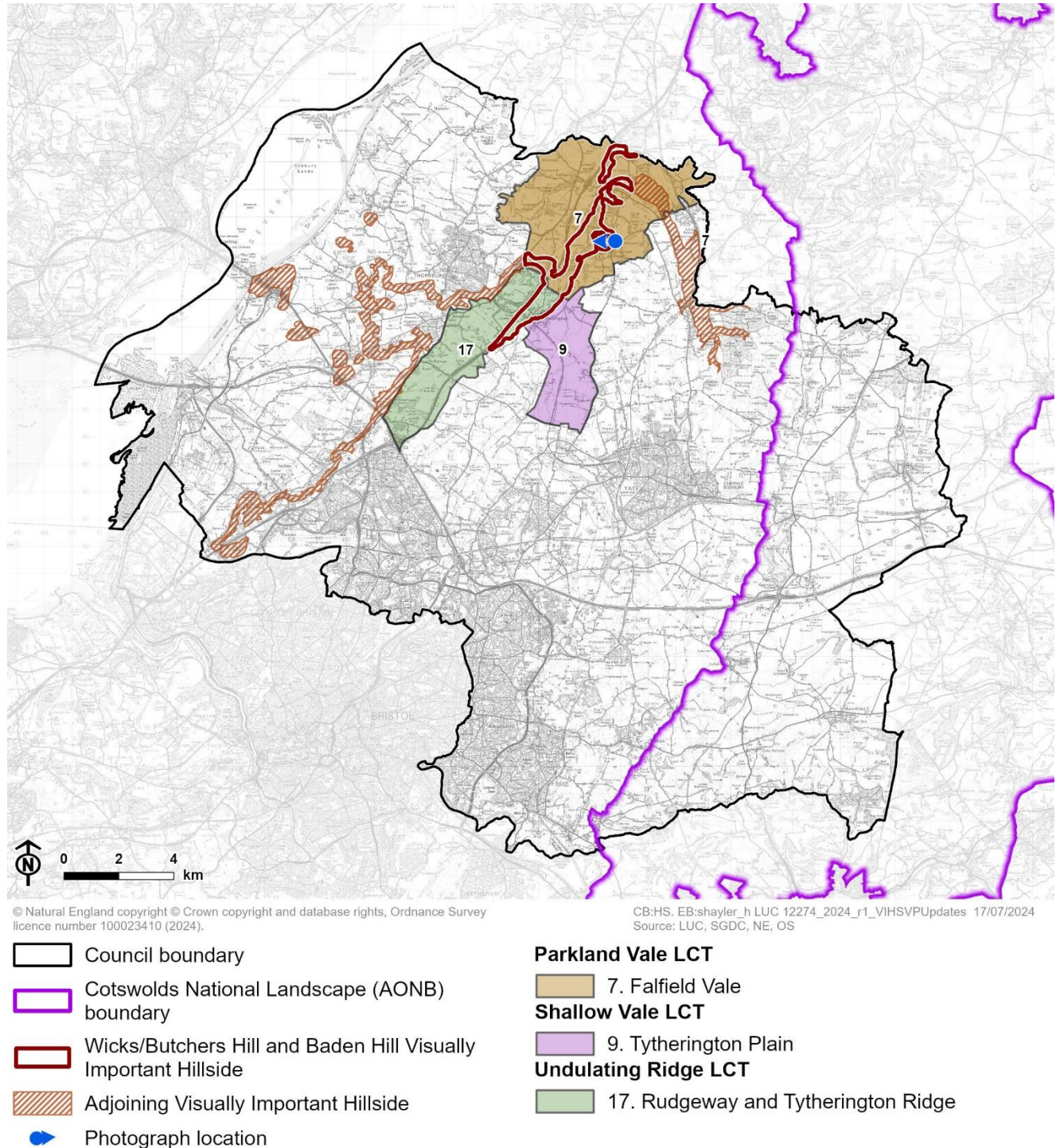
# Wick's / Butcher's Hill and Baden Hill – including Abbots-side Hill and outlying slopes between Howcroft Cottages and the Little Avon River

The Wick's Hill / Butcher's Hill and Baden Hill VIH comprises an elevated area, punctuated with three notable hills spanning from Tortworth in the north to Tytherington in the south. Hillsides include Wick's Hill, Baden Hill, and Abbots-side Hill. To the north of the main spine, the VIH also comprises the outlying slopes between Howcroft Cottages and the Little Avon River (north of the B4509 and east of the M5). The VIH is located within the north of South Gloucestershire, where it lies mostly within the Falfield Vale (LCA 7) landscape character area, extending into the Rudgeway and Tytherington Ridge (LCA 17) landscape character area in the south. It adjoins the Churchend Ridge VIH at Tortworth in the north-east, and the Severn Ridges VIH in the west at Buckover. Wick's Hill, the largest of the hills in the VIH group is distinguishable from the surrounding landscape due to its elevation and pronounced hillsides. The southern section of the VIH forms part of the setting of the Tytherington Conservation Area, and its northern section is an intrinsic part of the character of the Tortworth Court RPG (Grade II\*).



**Chapter 9** Wick's / Butcher's Hill and Baden Hill – including Abbots-side Hill and outlying slopes between Howcroft Cottages and the Little Avon River

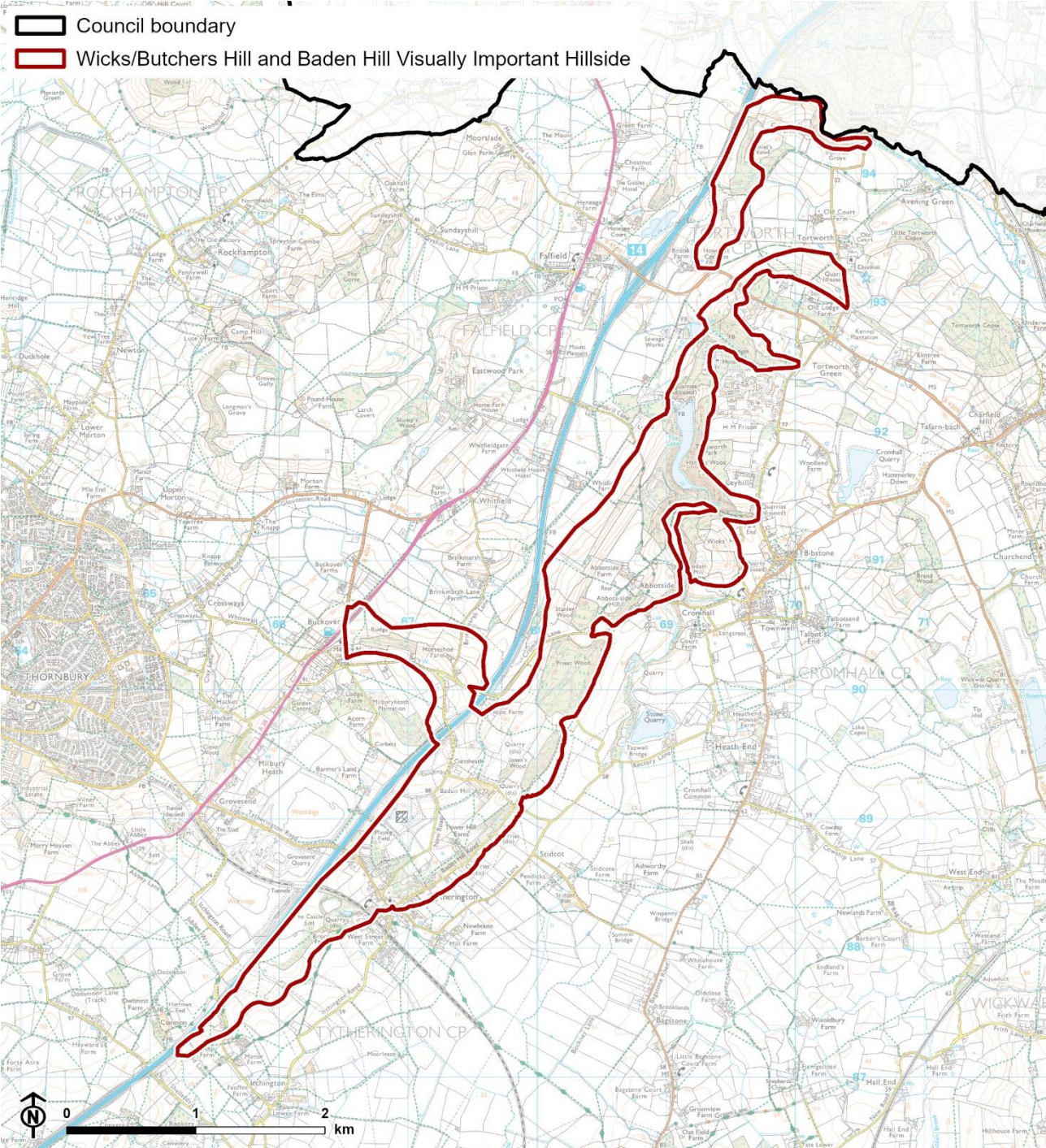
**Figure 9.1: Location of the Wick's / Butcher's Hill and Baden Hill Visually Important Hillside and landscape character context**





**Chapter 9** Wick's / Butcher's Hill and Baden Hill – including Abbots-side Hill and outlying slopes between Howcroft Cottages and the Little Avon River

**Figure 9.2: Detailed map of the Wick's / Butcher's Hill and Baden Hill Visually Important Hillside**



© Natural England. Contains Ordnance Survey data © Crown copyright and database rights, Ordnance Survey licence number 100023410, 2024. CB:HS. EB:HS. LUC 12274\_2024\_r2\_VIHSVPUpdates 18/07/2024 Source: LUC, SGDC, NE, OS



**Figure 9.3: View of Wick's / Butcher's Hill from Bibstone**



## Characteristics

### Distinctiveness and identity

- Wick's / Butcher's Hill, Baden Hill, and Abbots-side hill are all readily identifiable as natural landform features on OS mapping with contour lines forming concentric circles. The contour lines are close together indicating steep hillsides with both an easterly and westerly aspect (descending from around 90m to 40m within the main spine of the VIH and 50m to 20m along the outlying slopes in the north). This is clear when seen in context to the adjacent vale landscapes to the east and west (where contours are at larger intervals). A valley insertion from a tributary of the Ladden Brook is evident in the north of the VIH, where the contours are particularly steep (and narrow) with the tributary marked along the lowest point of elevation feeding into a lake at Tortworth Court RPG (Grade II\*). This is also the case along the northern edge of the outlying slopes in the north, with narrow contours indicating the steep valley side to the Little Avon River valley.
- The VIH is a distinctive feature with a strong sense of identity as noted in the following publications:
  - The description of LCA 7: Falfield Vale in the South Gloucestershire Landscape Character Assessment SPD notes the elevation of the hill and its sides, stating that physical processes have formed "*the rounded knoll of Wick's Hill at 92m AOD and the meandering small-scale valley within Tortworth Court Park.*"
  - The Tytherington Conservation Area appraisal **[See reference 1]** describes the slopes of Baden Hill as an "*impressive escarpment*" providing the village with "*an impressive backdrop of wooded slopes to the north*".



## Visual prominence

- Wick's Hill, the largest of the hills in the VIH, is distinguishable from the surrounding landscape due to its elevation and pronounced hillsides as noted in LCA 7: Falfield Vale, which mentions the prominence of Wick's Hill in relation to the dispersed and clustered settlement pattern of the area which is *"generally well-integrated, within the landform, contained by the backdrop of Wick Hill."*
- The VIH is visible from several public vantage points with the wooded hillsides forming a prominent backdrop seen within some long-distance views.

## Character and value

- The VIH contributes to the setting of the Tytherington Conservation Area (which is located on the VIH in the south), as Baden Hill forms a backdrop to the area.
- The landform of the VIH in the north contributes to the character of the Tortworth Court RPG (Grade II\*), which is located on a ridge overlooking the Severn Vale to the west.
- The character and appearance of the VIH is largely unspoilt by visual detractors as the hillsides are mostly undeveloped with modern development limited to linear settlement extending from Tytherington, scattered farmsteads and two solar farms (and a telecoms mast) in the close vicinity to Baden Hill, which can be seen from adjacent roads and the M5 motorway which intersects the westerly part of the VIH.
- Landcover across the VIH is a mix of pastoral and arable fields with regular boundaries and extensive woodland around Wick's Hill, Baden's Hill, Abbots-side Hill, and along the outlying slopes in the north, which limits the opportunity for outward views.
- The VIH has a role in the landscape by providing a prominent backdrop to the surrounding lower-lying landscape.

## Summary

Wick's / Butcher's Hill and Baden Hill is categorised as a VIH as it meets most of the criteria to some extent. It is readily identifiable as a natural landform feature on OS mapping; a distinctive feature with a strong sense of identity; has some prominence in views across the landscape; contributes to the setting of a Conservation Area and the character of a RPG; its character and appearance are largely unspoilt by visual detractors; and has a role in the landscape by forming a visual backdrop.

## References

- 1 Tytherington Conservation Area Appraisal. Available at:  
<https://beta.southglos.gov.uk/static/bbe9a7511d55e8dc97b960a820e6f0f4/Tytherington-Conservation-Area.pdf>



Report produced by LUC

# Report produced by LUC

## **Bristol**

12th Floor, Beacon Tower, Colston Street, Bristol BS1 4XE  
0117 929 1997  
bristol@landuse.co.uk

## **Cardiff**

16A, 15th Floor, Brunel House, 2 Fitzalan Rd, Cardiff CF24 0EB  
0292 032 9006  
cardiff@landuse.co.uk

## **Edinburgh**

Atholl Exchange, 6 Canning Street, Edinburgh EH3 8EG  
0131 202 1616  
edinburgh@landuse.co.uk

## **Glasgow**

37 Otago Street, Glasgow G12 8JJ  
0141 334 9595  
glasgow@landuse.co.uk

## **London**

250 Waterloo Road, London SE1 8RD  
020 7383 5784  
london@landuse.co.uk

## **Manchester**

6th Floor, 55 King Street, Manchester M2 4LQ  
0161 537 5960  
manchester@landuse.co.uk

## **Sheffield**

32 Eyre Street, Sheffield, S1 4QZ  
0114 392 2366  
sheffield@landuse.co.uk

## **landuse.co.uk**

Landscape Design / Strategic Planning & Assessment / Transport Planning  
Development Planning / Urban Design & Masterplanning / Arboriculture  
Environmental Impact Assessment / Landscape Planning & Assessment  
Landscape Management / Ecology / Historic Environment / GIS & Visualisation